



Interreg ANNUAL EVENT 2020

15 - 16 OCTOBER

#Interreg30

Territorial approaches – the potential of Community-led Local Development (CLLD)

Urszula Budzich-Tabor

FARNET Support Unit and LDnet

Interreg Annual Event

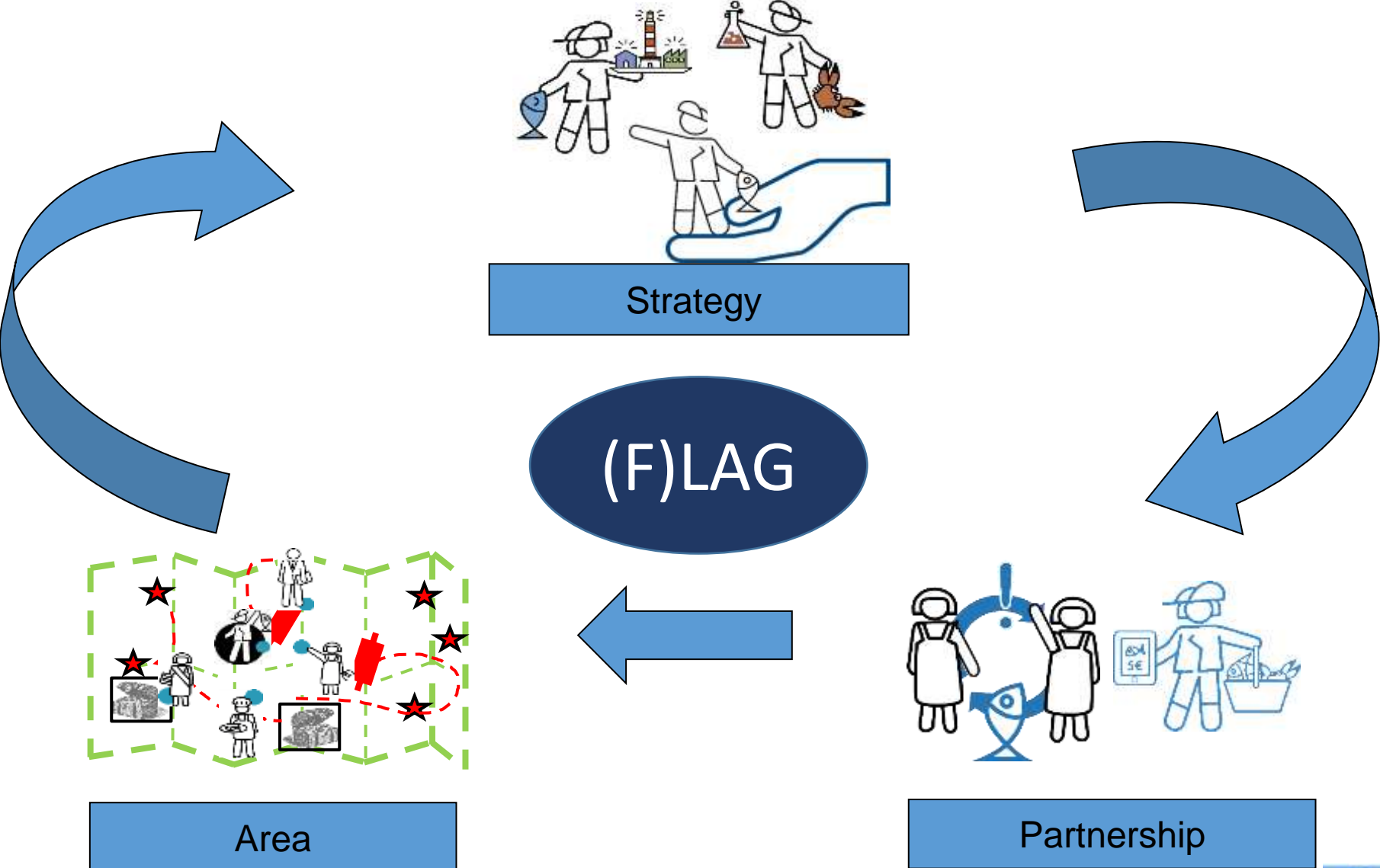
16 October 2020

A stylized number '7' logo with a pink-to-blue gradient, set against a black square background.

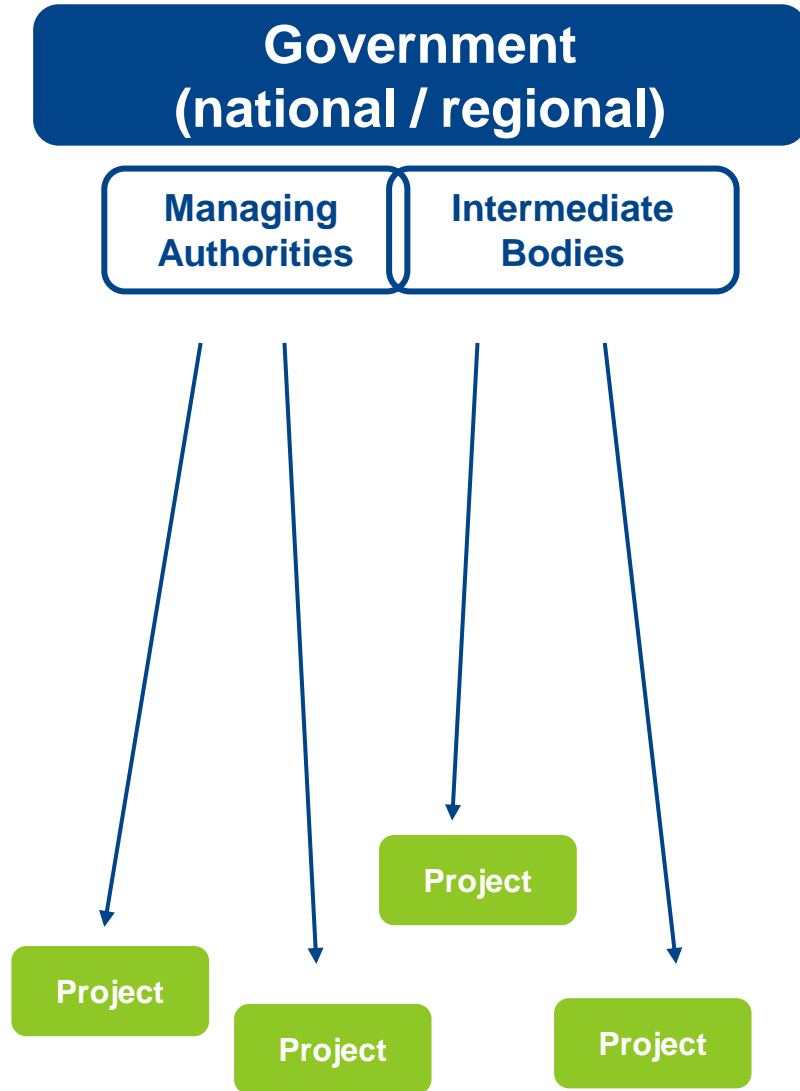
Reminder: seven key principles of CLLD:

- Bottom-up, decisions in the hands of the local community
- Area-based (not project-based)
- Integrated and multisectoral
- Partnership-based (public-private-NGO)
- Innovation
- Decentralisation of decision-making
- Cooperation, networking and learning from each other

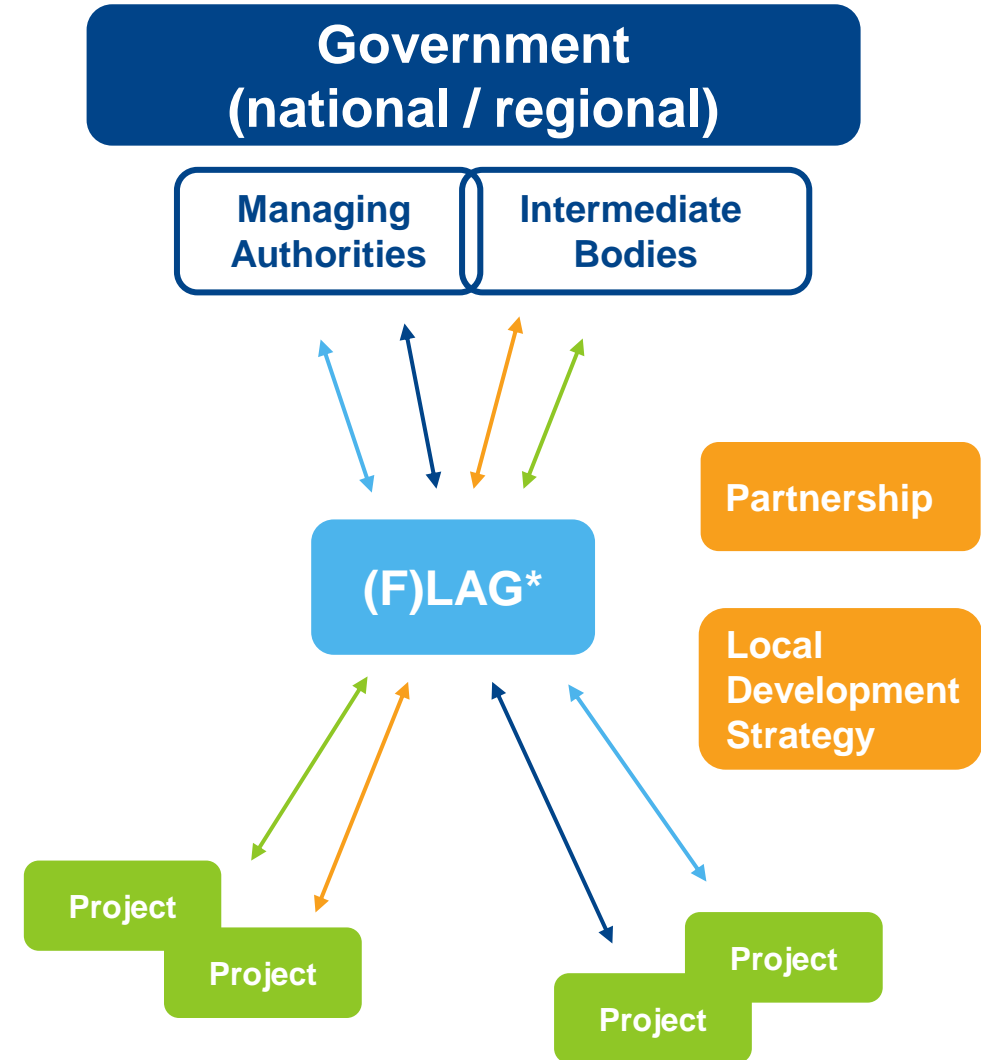
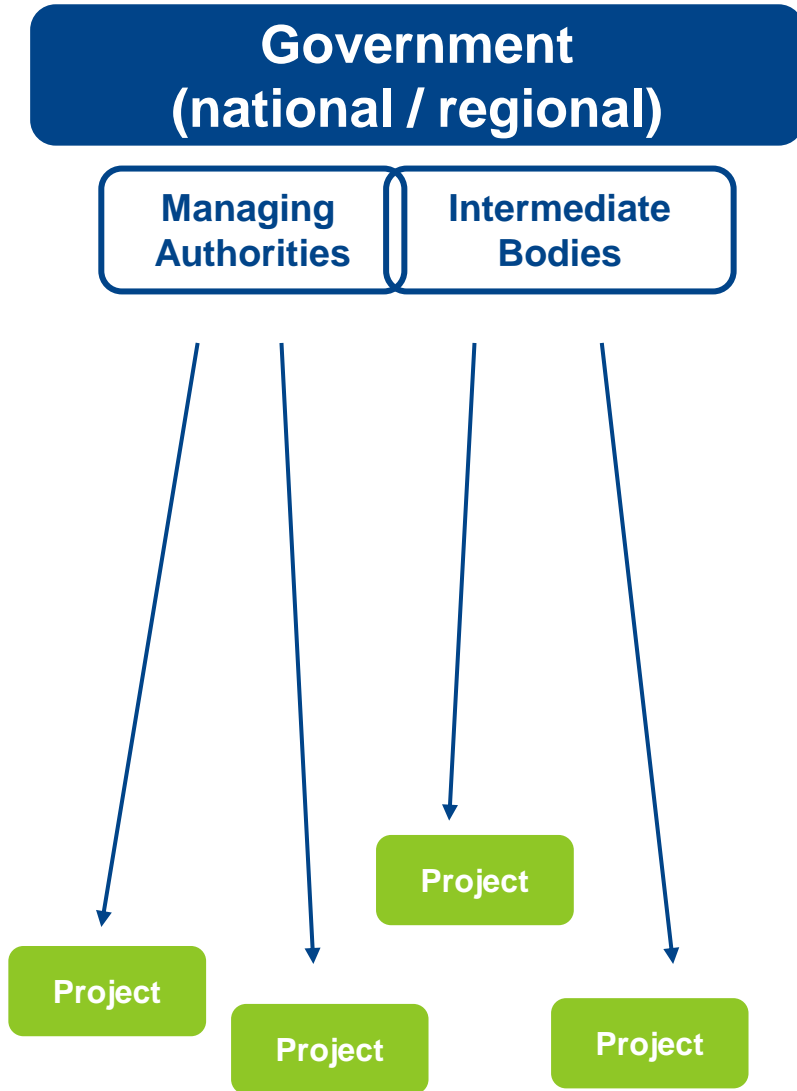
Reminder: basic components of CLLD



CLLD versus traditional approaches







CLLD versus traditional approaches



*(Fisheries) Local Action Group

Use of CLLD in different EU Funds

Fund	CLLD budget (EU contribution)	No. of MS (incl. UK)	No. of LAGs	Of which multi-funded
ERDF	 € 1 200 M*	15	519	518
ESF	 € 600 M*	11	572	537
EMFF	 € 550 M	20	358	102
EAFRD	 € 7 000 M	28	2825	624
CBC	€ 13 M	AT - IT	4	

*figures planned at the start of the period

What types of projects can be implemented?

www.farnet.eu

follow us on



Funded
by the



European
Commission

A wide range of projects, for example:

- Business development and job creation...
 - Social inclusion...
 - Environment, energy, climate change...
 - Public as well as private investment...
 - Promotion, education, awareness raising...
-
- No top-down measures, up to local actors to choose the objectives and type of activities supported
 - But: possibility of focusing on a specific target group or area (e.g. a deprived neighbourhood)
 - Ideally, following the 7 principles as far as possible!

Network of sustainable diving trails



- Cooperation of six FLAGs from GR and CY
- Expanding a network of diving and snorkeling trails with common standards of sustainability
- To promote the attractiveness of the areas and increase public awareness and protection of the seas
- Involves monitoring of marine biodiversity by fishermen and researchers to analyse potential impacts of tourism activities on marine life
- Funding: €230 000

Exchange to support sustainable local businesses

- Cooperation project of 8 LEADER LAGs from EE, LV and FI
- Exchange visits between small local businesses with a similar profile, LAGs as "match-makers"
- 3-7 days visits of two people, one of them a young person (16-30), focus on learning practices & ideas for joint action



- Provide inspiration and help establish mutually beneficial linkages
- Capacity building for the young
- Funding: ca. € 460 000

Transferring CLLD to Tunisian fishing communities

- Costa Degli Etruschi FLAG (IT)
- In partnership with a fishing organisation from Tuscany, cooperative from Corsica & WWF
- Funding from EASME (€312 000)



- Supporting the emergence of two local CLLD-type groups
- To foster economic diversification and social inclusion
- Training, twinning, help in LDS development...

A key lesson: the importance of delivery systems



- Significant differences between MS, many **additional rules** at national/regional level
- Systems designed for traditional, top-down approaches are **not the answer**

CLLD targets:

- Small
- Local
- Needs
- People

Lower administrative skills,
lower cash flow, lower human
resources

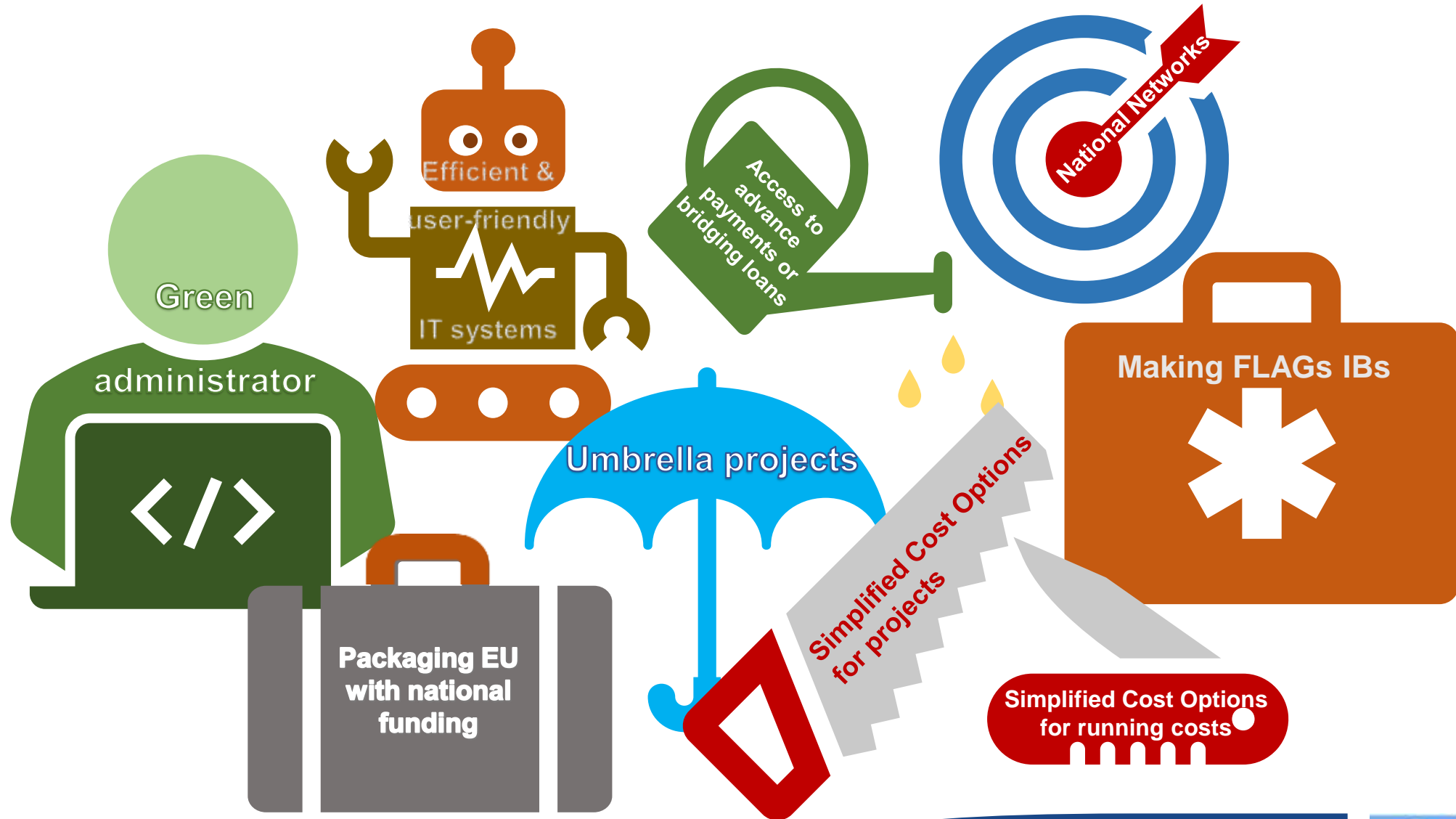
CLLD success factors:

- Encourage cooperation and innovation
- React quickly to emerging opportunities



AGILITY/FLEXIBILITY/SIMPLICITY

A wide range of tools and practical solutions





Interreg ANNUAL EVENT 2020
15 - 16 OCTOBER

Thankyou!



The contents and views expressed in this presentation are those of the FARNET Support Unit and not those of the European Commission