

The Urban Development Network @ the EU Week of Regions and Cities 2019

UDN session

ITI and CLLD: lessons learned and ways ahead

Lisbon Local Development Strategy - CLLD

Rui Bochmann Franco

**Brussels, Belgium
9 October 2019**

Lisbon Local Development Strategy

Empowering Communities for Local Development

#1 | Mapping Priorities - BIP/ZIP

Territorial & needs focus



#2 | Local Ignition - BIP/ZIP

Strengthening organisations



#4 | Lisbon CLLD Network

Empowering communities



#3 | Co-Governance - GABIP

Bottom-up integrated planning



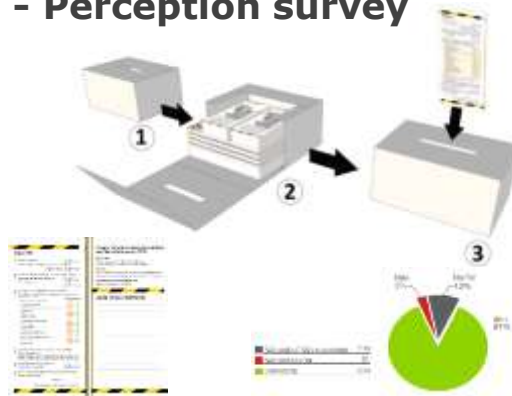
Mapping overlapping deficits; Understanding data & perception.

#1 | Mapping - BIP/ZIP Territorial & needs focus

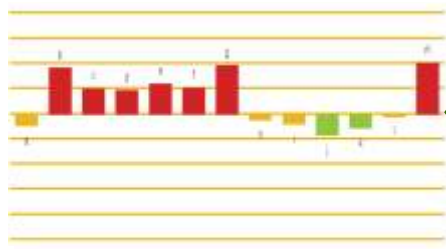
- Statistical data



- Perception survey



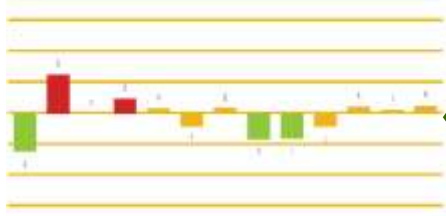
Classification to: Importance of the proposed topics , a) to m)?
(question 3)



- a) Empty / Degraded homes
- b) Public Transport
- c) Facilities
- d) Security
- e) Urban Hygiene
- f) Green Areas
- g) Local businesses
- h) Unemployment
- i) Marginality
- j) Elderly Loneliness
- k) Youth lack of occupation
- l) School drop out / academic failure
- m) Conflicts with neighbours

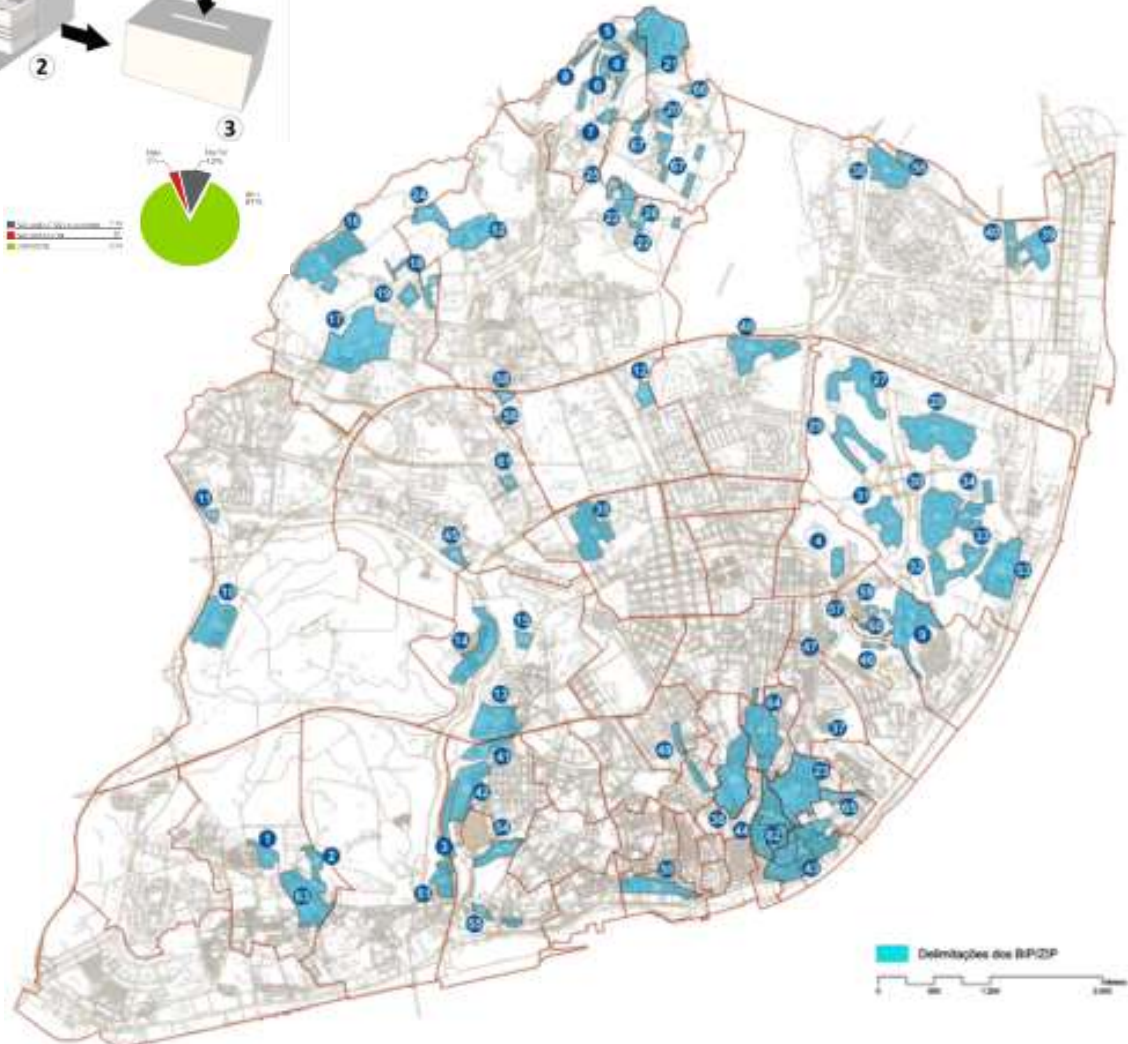
Deviation	0,036	0,398	0,227	0,198	0,241	0,207	0,387	-0,048	-0,281	-0,170	-0,114	-0,021	0,409
total Average	1,440	1,070	1,171	1,171	1,171	1,171	1,171	1,171	1,171	1,171	1,171	1,171	1,171
Municipal Average	1,384	1,084	1,077	1,061	1,070	1,074	1,074	1,074	1,074	1,074	1,074	1,074	1,074

Selection of: 3 topics that most concern the respondents , a) to m)?
(question 4)

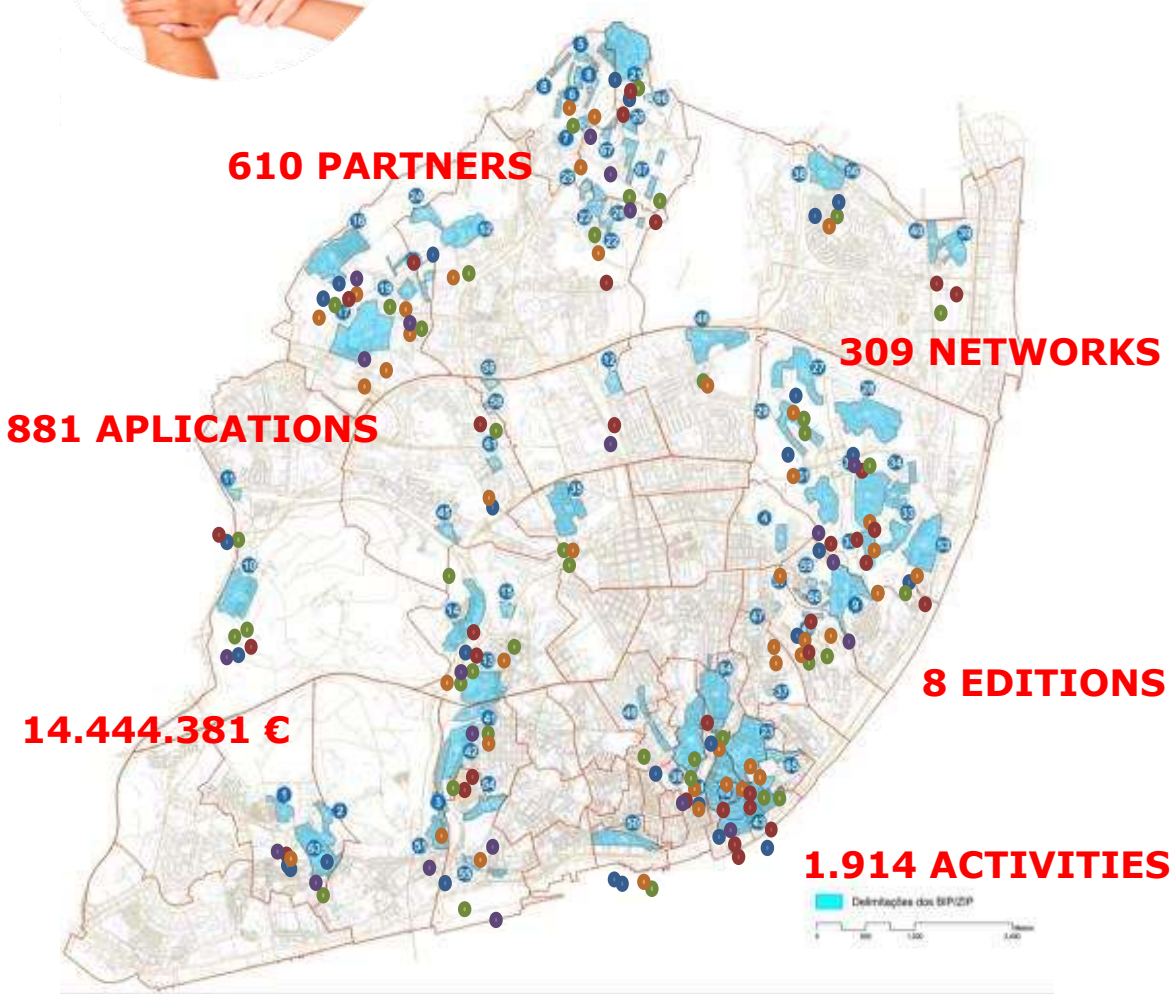


Deviation = Municipal answers index - Total enquiries Index

Deviation	-3,02%	4,05%	0,27%	1,19%	0,22%	-1,29%	0,92%	-1,69%	-3,07%	-1,27%	0,27%	0,29%	0,96%
total Average	1,14%	1,09%	0,22%	1,07%	0,89%	1,09%	0,92%	0,92%	0,92%	0,92%	0,92%	0,92%	0,92%
Municipal Average	1,09%	1,04%	0,25%	1,03%	0,84%	0,92%	0,92%	0,92%	0,92%	0,92%	0,92%	0,92%	0,92%



#2| Local Ignition - BIP/ZIP Strengthening organisations



REAL IMPACT

67 COMMUNITIES

270 PROJECTS

28 NEW BRANDS

2 JOBS / PROJECT

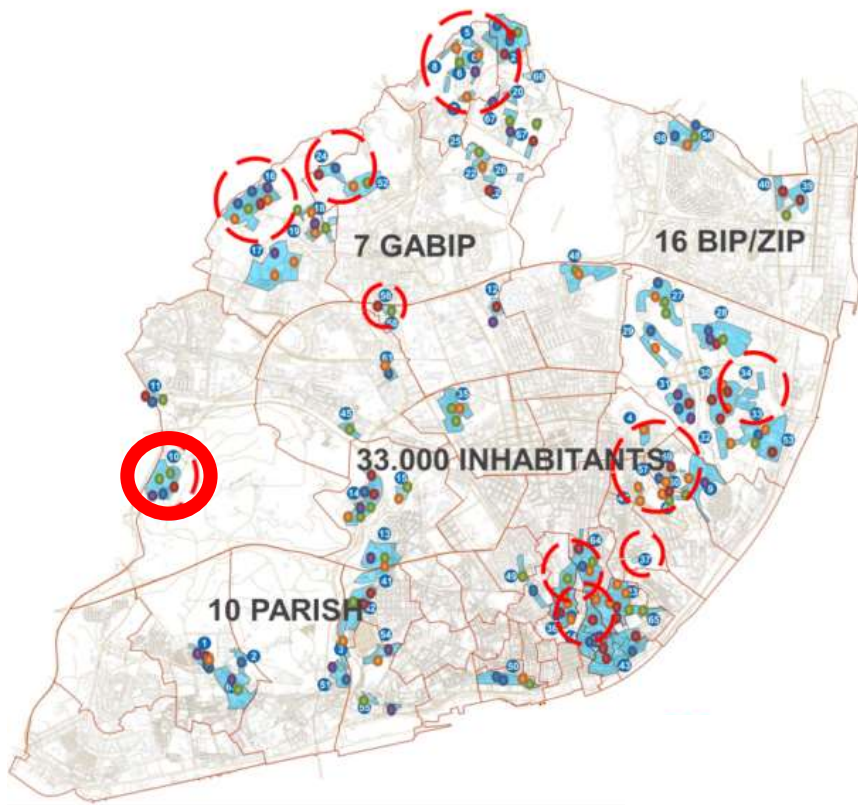


#3 | Co-Governance - GABIP

Bottom-up integrated planning

The example of
'Eco-District Boavista Environment+
integrated Action Plan

By GABIP-Boavista



#3 | Co-Governance - GABIP

Bottom-up integrated planning

Eco-District Boavista Environment+ integrated Action Plan

ERDF grant of 2,5m€ and total investment of 4,4m€:

	Investment areas distribution:	components/contracts (63):	investment:	%
#1	Residential buildings renewal, improvement of environmental efficiency	1.29, 1.30, 1.31, 1.32, 1.33, 1.34, 1.35, 1.37, 1.39.1, 1.39.2 and 1.41	2,401,535.04 €	55%
#2	Building of new Community Equipment	1.1, 1.3, 1.5, 1.6, 1.7, 1.9.1, 1.9.2, 1.9.3, 1.10, 1.11, 1.12, 1.13, 1.14, 1.15, 1.18, 1.21, 1.22 and 1.23	955,878.82 €	22%
#3	Renewable Energy installations	1.2, 1.8.1, 1.8.2, 1.19, 1.20, 1.43.1, 1.43.2 and 1.43.3	372,574.97 €	8%
#4	'Net-Verde' district free WIFI	1.24	32,500.00 €	1%
#5	Energy and Environmental education and monitoring	1.17.4, 1.25 and 12.4	80,580.00 €	2%
#6	Participation and Media	1.16, 1.17.1, 12.1.1, 12.1.2, 12.1.3, 12.2 and 12.3	71,725.50 €	2%
#7	Recreational and Sporting Activities	1.17.2, 1.17.3, 1.26, 1.27.1, 1.27.2, 1.28.1 and 1.28.2	87,000.00 €	2%
#8	'Alvenaria' renewal: urban and architectural projects	1.4.1, 1.4.2, 1.4.3, 1.4.4, 1.4.5 and 1.43.3	226,350.00 €	5%
#9	Project coordination, management and monitoring	12.5 and 12.6	162,000.00 €	4%

4,390,144.33 €

*Undergoing phased construction over 40M with 50% EIB loan.





Lisbon Community-led Local Development Network

Lisbon Community-Led Local Development Network, established in February 7th 2015, is a **bottom-up co-governance network**, managing the Local Development Strategy for Lisbon Priority Territories (BIP/ZIP), training, empowering and funding local community projects.

The network has **173 member organizations**, mainly non-profit like local associations (51%), district councils (10%), national organisations (24%), foundations (6%), and universities (6%).

Based on the growing collaboration with civic organizations, in 2013 the City of Lisbon used the opportunity offered by the Community-Led Local Development (CLLD) instrument according to the Regulation (EU) Nº 1303/2013 of the European Parliament and the Council of 17 December 2013, we obtained the status of **middle-level manager as Urban CLLD**.

#4| Lisbon CLLD Network *Empowering communities*

Focusing our intervention on **Education, Employment and Inclusion**, we are commissioned to manage aprox. **4M euro of ERDF/ESF** for local initiatives and **1M euro for internal budget** on staff and direct activities until 2020.

We are also running several other projects on empowering the local organizations and the BIP/ZIP territories, economic and social-territorial cohesion.

For the present term (2018/2019), the board is hold by the Municipality of Lisbon (president), EAPN – Europe Anti-Poverty Network (vice-president), ANIMAR, CLIP and Fidalgo da Penha.

Lisbon CLLD Network initiative is part of the **"URBACT's Good Practice - Lisbon Local Development Strategy"** and is involved in the "Com.Unity.Lab - URBACT's Transfer Network", supporting other European cities to adopt similar approaches.